



सत्यमेव जयते

Government of India



Foundation Stone Laying, Karya Prarambh, Griha Pravesh, Dedication to the Nation & Flag off

of

Power, Oil & Gas, Railway, Road, Education and
Housing Development Projects

Worth Over ₹ 33,700 Crore

by

Shri Narendra Modi

Hon'ble Prime Minister

30th March, 2025 at Bilaspur, Chhattisgarh



Ministry of Power
Ministry of Petroleum and Natural Gas
Ministry of Railways
Ministry of Road Transport & Highways
Ministry of Education
Ministry of Rural Development



सत्यमेव जयते

Ministry of Power



Department of Energy
Government of Chhattisgarh



NTPC Sipat Super Thermal Power Project, Stage-III (1x800 MW)



Project Cost
₹ 9791 Crore



Project Capacity
1x800 MW

Project Brief:

- ➔ Located in Bilaspur Distt., Chhattisgarh
- ➔ Being set up in the available land in the premises of NTPC's existing Sipat Super Thermal Power Station.
- ➔ Nearest railway station: Jairamnagar (3 Kms), Nearest Airport: Raipur (150 Kms)
- ➔ Based on Ultra Super Critical Technology
- ➔ Major beneficiaries: - Chhattisgarh, Gujarat, Madhya Pradesh, Maharashtra & Goa.



Project Benefits:

- ➔ Supports India's quest for energy self-sufficiency and sustainable development initiatives.
- ➔ Positions Chhattisgarh as a significant player in fulfilling Central India's energy needs.
- ➔ Enhances local infrastructure with state-of-the-art facilities.
- ➔ Strong government support and international interest to draw substantial investments in Chhattisgarh.



Western Region Expansion Scheme – XXVII (WRES-XXVII) implemented by POWERGRID Raipur Pool Dhamtari Transmission Limited -176 ckm addition in National Grid



Project Cost
₹ 260 Crore

Project Brief:

- ➔ 400KV D/C Raipur Pool – Dhamtari line (176Ckm)
- ➔ 400 kV line bays at Raipur Pool (POWERGRID) S/s for termination of Raipur Pool – Dhamtari 400kV D/c line.
- ➔ 400 kV line bays at Dhamtari (CSPTCL) S/s for termination of Raipur Pool – Dhamtari 400kV D/c line.

Project Benefits:

- ➔ **Western Region Expansion Scheme – XXVII (WRES-XXVII)**
- ➔ Establishment of 400kV D/c Raipur Pool-Dhamtari Transmission line in Chhattisgarh.
- ➔ Provides ISTS feed to Dhamtari substation of CSPTCL.
- ➔ Supports ISTS grid for interregional power flow towards Odisha.
- ➔ Relieves overloading on NSPCL's ICT.
- ➔ Enhances total transfer capability of Chhattisgarh.

Western Region Expansion Scheme – XXVIII (WRES-XXVIII) implemented by POWERGRID Dharamjaigarh Transmission Limited -1500 MVA Transformation Capacity addition in National Grid



Project Cost
₹ 193 Crore

Project Brief:

- ➔ Creation of 220 kV level (GIS) at 765/400 kV Raipur Pool S/s with Installation of 3x500 MVA, 400/220 kV ICTs along with associated ICT bays (220kV-GIS).
- ➔ 02 nos. 220kV line bays (GIS) at Raipur Pool S/s for termination of Raipur Pool – Rajnandgaon 220 kV D/c line.
- ➔ 6 nos. 220kV line bays (GIS) at Raipur Pool S/s for termination of various lines planned by CSPTCL.

Project Benefits:

Western Region Expansion Scheme-XXVIII (WRES-XXVIII)

- ➔ Improves power supply reliability in North-West Raipur district, Chhattisgarh.
- ➔ Provides direct feed to major load centers like Borjhara and Urla.
- ➔ Enhances Chhattisgarh's import capability.
- ➔ Relieves the load on Raipur's 400/220kV ICTs.
- ➔ Ensures stable and efficient power supply to meet growing energy demands.

Western Region Expansion Scheme – XXIX (WRES-XXIX) implemented by POWERGRID Dharamjaigarh Transmission Limited - 1000 MVA Transformation Capacity addition in National Grid



Project Cost
₹ 115 Crore

Project Brief:

- ➔ Creation of 220 kV level at 765/400 kV Dharamjaigarh S/s with Installation of 2x500 MVA, 400/220 kV ICTs along with associated ICT bays.
- ➔ 2 nos. 220kV line bays at Dharamjaigarh S/s (for termination of Dharamjaigarh-Chhuri 220 kV D/c line).
- ➔ 2 nos. 220kV line bays at Dharamjaigarh S/s (for termination of Dharamjaigarh – Dharamjaigarh CSP 220 kV D/c line).



Project Benefits:

- ➔ **Western Region Expansion Scheme – XXIX (WRES-XXIX)**
- ➔ Enhances power supply reliability in North-West Korba and Northern Raigarh districts of Chhattisgarh.
- ➔ Provides direct feed to Chhuri and Dharamjaigarh CSP substations.
- ➔ Ensures stable and efficient power supply to key load centers.



Chhattisgarh State Power Generation Company Ltd. (2x660 MW) SCTPP Stage-IV, Korba-West



Project Cost
₹15,800 Crore



Project Capacity
2x660 MW

Project Brief:

- ➔ Expansion of existing Hasdeo Thermal Power Station with a total capacity of 1340 MW (Stage-I: 2x210 MW, Stage-II: 2x210 MW, Stage-III: 1x500 MW).
- ➔ Located in Korba District, Chhattisgarh; nearest railway station: 7.7 km, nearest airport: 100 km (Bilaspur).
- ➔ Based on efficient Supercritical Technology.
- ➔ **Beneficiary: Chhattisgarh.**

Project Benefits:

- ➔ Based on Super Critical Technology for higher efficiency, lower coal consumption and reduced Co2 emissions.
- ➔ Pit Head Plant, leading to lower fuel costs.
- ➔ Land for the plant available within existing premises, no land acquisition or rehabilitation required.
- ➔ CSR efforts to enhance health and education of local inhabitants.





सत्यमेव जयते

Ministry of Petroleum and Natural Gas



City Gas Distribution (CGD) project in Korea, Surajpur, Balrampur & Surguja Districts of Chhattisgarh -Bharat Petroleum (BPCL)



Project Cost
₹ 1285 Crore

Project Brief:

- ➔ PNGRB Authorization: Bharat Petroleum Corporation Ltd. received authorization on 14th June 2022 to develop a CGD network in Korea, Surajpur, Balrampur, and Surguja districts, including the newly formed MCB district.
- ➔ Total approved cost of ₹1,285 crore with ₹1,234 crore for Minimum Work Program (MWP) over 8 years.
- ➔ Provides PNG (Piped Natural Gas) connections to households, commercial & industrial customers.
- ➔ Establishes CNG stations for vehicular fuel.
- ➔ Lays steel pipelines to develop a strong gas distribution infrastructure.

Project Benefits:

- ➔ Supports India's net-zero goals by promoting natural gas & reducing air pollution.
- ➔ Provides clean energy to over 41 lakh people, improving quality of life and supporting sustainable development.



Visakh Raipur Pipeline Project- Hindustan Petroleum (HPCL)



Project Cost
₹ 2212 Crore

Project Brief:

- ➔ 540 km long Multiproduct Petroleum Pipeline with a capacity of 3.03 MMTPA.
- ➔ Passes through Andhra Pradesh (165 km), Odisha (280 km), and Chhattisgarh (95 km).
- ➔ New Pump Station at VVSPL Visakh Dispatch station, A.P.
- ➔ Intermediate Pump Stations at Rayagada and Kantabanji.
- ➔ New Greenfield POL Depot at Kantabanji, Odisha (10,000 KL product storage).
- ➔ 15 Sectionalizing Valve (SV) Stations

Project Benefits:

- ➔ Supports PM's vision for faster last-mile deliveries and energy security.
- ➔ Enhances accessibility by connecting Visakhapatnam Refinery, Kantabanji & Raipur.
- ➔ Facilitates petroleum product availability in Odisha, Chhattisgarh, Maharashtra, Madhya Pradesh, Jharkhand & West Bengal.
- ➔ Reduces CO2 emissions by 3,436 MT through optimized logistics, ensuring safer, cost-efficient & eco-friendly transportation.





सत्यमेव जयते

Ministry of Railways



Railway Projects



Project Cost
₹ 2,695 Crore

Project Brief:

1. Kharsia-Jharradih (5th Line)

Total Length: 6 km

Total Cost: ₹80 Crore



2. Saragbundia-Madwarani (3rd and 4th Line)

Total Length: 12 km

Total Cost: ₹168 Crore



3. Dadhapara-Belha-Dagori (4th Line)

Total Length: 16 km

Total Cost: ₹256 Crore



4. Nipania-Bhatapara-Hathbandh (4th Line)

Total Length: 23 km

Total Cost: ₹347 Crore



5. Bhilai-Bhilai Nagar-Durg Link Cabin (4th Line)

Total Length: 12 km

Total Cost: ₹233 Crore



6. Rajnandgaon-Dongargarh (4th Line)

Total Length: 31 km

Total Cost: ₹328 Crore



7. Kargi Road-Salka Road (3rd Line)

Total Length: 8 km

Total Cost: ₹95 Crore



8. Rajnandgaon-Bortalao (3rd Line)

Total Length: 48 km

Total Cost: ₹747 Crore

Part of the Rajnandgaon-Nagpur 3rd Line Project, total length - 228 km



9. New Railway Line – Mandir Hasaud-Kendri-Abhanpur

Total Length: 26 km

Total Cost: ₹353 Crore



10. Durg-Raipur (Automatic Signaling)

Total Length: 37 km

Total Cost: ₹88 Crore



11. 100% Electrification of Railway Lines in Chhattisgarh



12. Flagging off (Through Video link) of MEMU Train Service between Abhanpur- Raipur section via Mandir Hasaud



Project Benefits:

- The introduction of MEMU train services will enhance regional connectivity and generate employment opportunities, providing faster and more convenient commuting options for passengers.
- Boosts travel efficiency by increasing train speeds on newly constructed third, fourth, and fifth railway lines.
- Strengthens freight transport by making the movement of coal, steel, and other goods more cost-effective and timely, contributing to economic growth.
- Supports regional development by connecting New Raipur to the railway network via the Abhanpur-Kendri-Mandir Hasaud line.
- Increases rail network capacity, ensuring smoother operations and reducing congestion for both passenger and freight trains.

Up-gradation of Kondagaon- Narayanpur section of NH-130D to 2L with paved shoulder



Project Cost
₹322.40 Crore



Project Length
47.493 Km

Project Brief:

- ➔ Lane Configuration: 2L+PS (Two-lane with paved shoulders).
- ➔ NH-130D stretches 195 km, connecting Kondagaon (Chhattisgarh) to Maharashtra, passing through Narayanpur District; 98 km of this stretch is in Chhattisgarh.

Project Benefits:

- ➔ Enhances access between the tribal region of Narayanpur and Raipur, as well as Jagdalpur.
- ➔ Improves travel to Narayanpur town, offering better public services.
- ➔ Strengthens links between Chhattisgarh and Maharashtra.

Rehabilitation & Upgradation of Ambikapur- Pathalgaon section of NH-43 to 2L with paved shoulder



Project Cost
₹ 731.5 Crore



Project Length
74.63 Km

Project Brief:

- ➔ Located in Surguja and Jashpur districts, with important places like Mainpat hill station and Shri Hanuman temple at Lamgaon.
- ➔ Lane Configuration: 2L+PS (Two-lane with paved shoulders).
- ➔ Upgraded from 7m carriageway to a two-lane with paved shoulders in rural areas and four-lane in town portions, improving travel speed and reducing fuel costs.

Project Benefits:

- ➔ Enhances inter-state links between Surguja, Jashpur (Chhattisgarh) and Madhya Pradesh/Jharkhand.
- ➔ Easier access to Mainpat hill station and Shri Hanuman temple in Lamgaon.
- ➔ Improves access to health and education in tribal regions.



Upgradation of Jhalmala to Sherpar section of NH-930 to 2L with paved shoulder



Project Cost
₹ 222.86 Crore



Project Length
37.28 Km

Project Brief:

- ➔ Located in Project area in Mohla-Manpur-Ambagarh Chowki and Balod districts, Chhattisgarh.
- ➔ Lane Configuration: 2L+PS (Two-lane with paved shoulders).
- ➔ Reduces travel distance to Hyderabad (705 km) compared to the Raipur-Jagdulpur-Konta route (874 km), attracting more traffic.

Project Benefits:

- ➔ Improves links between Mohla-Manpur-Ambagarh Chowki, Balod, and Raipur.
- ➔ Easier access to Maa Ganga Maiya temple in Jhalmala and Tandula Dam in Balod.
- ➔ Facilitates access to Dalli Rajhara mines, aiding industrial and commercial growth.
- ➔ Strengthens links between Chhattisgarh and Maharashtra, helping curb Naxalism in the region.





सत्यमेव जयते

Ministry of Education



Vidya Samiksha Kendra, Chhattisgarh



Project Cost
₹ 5.0 Crore

Project Brief:

- ➔ Operates on the 6A data framework (Attendance, Assessment, Administration, Adaptive Learning, Accreditation, AI-Based Analysis).
- ➔ Integration with national educational programs (PM POSHAN, UDISE+, NAS, DIKSHA, NISHTHA, APAAR).
- ➔ Developed in collaboration with IIT Bhilai for in-depth data analysis.
- ➔ Dashboard for tracking attendance, exam results, school infrastructure, and academic progress.

Project Benefits:

- ➔ Real-time tracking of student, teacher, and school data enhances oversight and accountability.
- ➔ Helps in the optimal distribution of educational resources by analyzing infrastructure, attendance, and performance data.
- ➔ The Automated Permanent Academic Account Registry (APAAR) helps track student progress and reduce dropouts.
- ➔ Leverages AI for in-depth analysis, improving educational outcomes through targeted interventions.



130 PM SHRI Schools in Chhattisgarh



Project Cost (3rd & 4th Phase)
₹ 114.65 Crore

Project Brief:

- ➔ PM SHRI (PM Schools for Rising India) scheme was launched in 2022 under the National Education Policy (NEP) 2020.
- ➔ Schools selected in 3 phases—211 schools in the first phase, 52 in the third phase, and 78 in the fourth phase. 130 schools to be inaugurated in third & fourth phases in 29 Districts of Chhattisgarh.
- ➔ The scheme covers 270 out of 316 blocks/urban bodies in Chhattisgarh.
- ➔ 211 schools in the first phase were inaugurated on February 19, 2024, by the Education Minister of India and Chief Minister of Chhattisgarh.

Project Benefits:

- ➔ Total Student Beneficiaries (3rd & 4th Phase): 126153 No.
- ➔ Well-structured infrastructure, smart boards, modern laboratories, and libraries.
- ➔ Prepares students to compete globally while contributing to Atmanirbhar Bharat.
- ➔ Ensures access to quality education across Chhattisgarh, reaching both urban and rural areas.





सत्यमेव जयते

Ministry of Rural Development



प्रधानमंत्री आवास योजना (ग्रामीण)

- हितग्राही का नाम - फुलुश्वर कुमार
- पिता - पलकूराम कुमार
- ठरग - PVTQ कमार (HIS/06/2355)
- स्वीकृत वर्ष - 2023-24
- ग्राम/वि. खं./ जिला - कर्लमठा त्तमरि
धमरुगै (छ. ग.)
- स्वीकृत राशि - PM जनमल योजना 2.00 लाख
- सतरणग - 90 क्विटर.

Griha Pravesh of 03 lakh beneficiaries of (PMAY-G) -handing over keys to 03 beneficiaries (01 from Niyad Nellanaar area/01 from PMAY(G) and 01 from PMJANMAN scheme)

Project Brief:

- ➔ Griha pravesh of 3 lakh beneficiaries of (PMAY-G)
- ➔ Over 2500 beneficiaries from Naxalite-affected areas are also part of this scheme.



Project Benefits:

- ➔ Ensures that 3 lakh rural households are provided with permanent homes, addressing the housing gap in rural areas.
- ➔ Access to proper housing improves health, security, and overall quality of life for beneficiaries.
- ➔ Benefits under PMAY-G, scheme ensure inclusive welfare by targeting underprivileged and marginalized communities.
- ➔ Ensures stability, dignity, and well-being for rural families, particularly women and children who benefit from safe, secure living conditions.



An Overview

Projects proposed For Foundation Stone Laying, Karya Prarambh, Griha Pravesh, Dedication to the Nation & Flag off on 30.03.2025

FOUNDATION STONE LAYING

Sl.No.	Ministry	Organisation	Name of the Project
1	Ministry of Power	NTPC	NTPC Sipat STPP, Stage-III (1x800 MW)
2	Ministry of Petroleum and Natural Gas	Hindustan Petroleum (HPCL)	Visakh Raipur Pipeline Project
3	Ministry of Petroleum and Natural Gas	Bharat Petroleum (BPCL)	CGD project in Korea , Surajpur, Balrampur & Surguja Districts of Chhattisgarh State
4	Ministry of Railways	Indian Railways	5th line between Kharsia - Jharadih (6 km)
5	Ministry of Railways	Indian Railways	3rd and 4th line – Madwarani-Saragbundia (12 km)
6	Ministry of Railways	Indian Railways	4th line – Dadhapara-Belha-Dagori (16 km)
7	Ministry of Railways	Indian Railways	4th line – Nipania - Bhatapara-Hathband (23 km)
8	Ministry of Railways	Indian Railways	4th line – Bhilai – Bhilainagar - Durg link cabin (12 km)
9	Ministry of Railways	Indian Railways	4th line – Rajnandgaon - Dongarhgarh (31 km)
10	Ministry of Railways	Indian Railways	3rd line – Kargi Road - Salka Road (8 Km)
11	Ministry of Road Transport & Highways	MORTH	Up-gradation of Kondagaon-Narayanpur section of NH130D to 2L with paved shoulder (47.493 Km)

COMMENCEMENT OF WORK FOR

Sl.No.	Ministry	Organisation	Name of the Project
1	Ministry of Power	CSPGCL	Chhattisgarh State Power Generation Company Ltd. (2x660 MW) SCTPP Stage-IV Korba West

DEDICATION TO THE NATION

Sl.No.	Ministry	Organisation	Name of the Project
1	Ministry of Power	PowerGrid	Western Region Expansion Scheme – XXVII (WRES-XXVII) implemented by POWERGRID Raipur Pool Dhamtari Transmission Limited 176 Ckm addition in National Grid
2	Ministry of Power	PowerGrid	Western Region Expansion Scheme – XXVIII (WRES-XXVIII) implemented by POWERGRID Dharamjaigarh Transmission Limited -1500 MVA Transformation Capacity addition in National Grid
3	Ministry of Power	PowerGrid	Western Region Expansion Scheme – XXIX (WRES-XXIX) implemented by POWERGRID Dharamjaigarh Transmission Limited -1000 MVA Transformation Capacity addition in National Grid
4	Ministry of Railways	Indian Railways	3rd line – Rajnandgaon - Bortalao (48 km)--(Part of Rajnandgaon - Nagpur – 3rd line (228 km))
5	Ministry of Railways	Indian Railways	New line : Mandir Hasaud - Kendri - Abhanpur (26 km)
6	Ministry of Railways	Indian Railways	Durg - Raipur Automatic Signalling (37 Rkm)
7	Ministry of Railways	Indian Railways	100% Electrification of Rail Network in Chhattisgarh

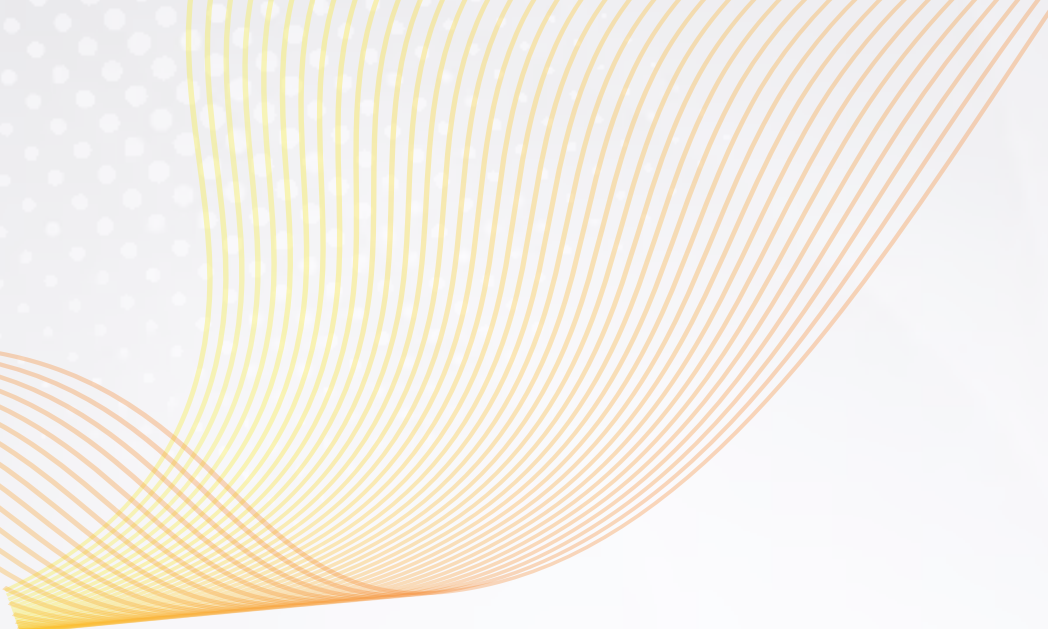
8	Ministry of Road Transport & Highways	MORTH	Upgradation of Jhalmala to Sherpar section of NH-930 to 2L with paved shoulder (37.28 Km)
9	Ministry of Road Transport & Highways	MORTH	Rehabilitation & Upgradation of Ambikapur-Pathalgaon section of NH-43 to 2L with paved shoulder (74.63 km)
10	Ministry of Education	MoE	Vidya Samiksha Kendra, Raipur (Chhattisgarh)
11	Ministry of Education	MoE	130 PM SHRI Schools in Chhattisgarh

GRIHA PRAVESH OF

Sl No.	Ministry	Organisation	Name of the Project
1	Ministry of Rural Development	MoRD	Griha Pravesh of 03 lakh beneficiaries of (PMAY-G) -handing over keys to 03 beneficiaries (01 from Niyad Nellanaar area/01 from PMAY(G) and 01 from PMJANMAN scheme)

FLAGGING OFF

Sl No.	Ministry	Organisation	Name of the Project
1	Ministry of Railways	Indian Railways	Flagging off (Through Video link) of MEMU Train Service between Abhanpur- Raipur section via Mandir Hasaud



सत्यमेव जयते

Government of India